

Instructions for use



Anti His Serum 3735

**Polyclonal serum for detection of His-tagged proteins.
Primary Anti His antibody.**

I. Introduction:

Roth Anti His serum represents an antiserum containing polyclonal rabbit antibodies, and has been specifically designed for detection of His-tagged recombinant proteins. Anti His serum shows high specificity for recombinant proteins providing an N-terminal or C-terminal 5-6 amino acid histidine stretch, even with low protein amounts in complex protein mixtures such as bacterial or cellular extracts.

II. Concentration and purity:

polyclonal

III. Parameters

Raised in: Rabbit

Target: C-terminal or N-terminal His-tagged proteins

Conjugation: none

Application: Immuno blotting (Western-, dot blotting), ELISA, protein isolation

Carl Roth GmbH+Co. KG

Schoemperlenstraße 3-5
76185 Karlsruhe
Postfach 100121
76231 Karlsruhe

Telefon: (+49)721/5606-0
Telefax: (+49)721/5606-149
E-Mail: info@carlroth.de
Internet: www.carlroth.de

s.t. 04/2017

Purification and specificity: Tested for Western Blot and ELISA.

Storage Buffer: none

Stabiliser: none

IV. Application:

Western-Blot: Detection of His-tagged proteins may be performed in each standard buffer system like PBS, PBST, etc. with each standard blocking reagent like Casein, Albumin, fat-free milk, Roti[®]-Block etc.

Perform SDS-PAGE and transfer according to your standard protocol. For detection, incubate your membrane in Roth Anti His serum in incubation buffer for 1 h at room temperature under gentle agitation. Bound Anti His serum can be visualised using any anti-rabbit secondary antibody, followed by incubation with an appropriate colorimetric or chemoluminescent substrate.

ELISA: Perform ELISA according to your standard protocol with your standard incubation buffer. Bound Anti His serum can be visualised using any anti-rabbit secondary antibody, followed by incubation with an appropriate colorimetric or fluorescent ELISA substrate.

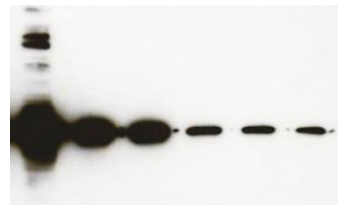


Figure: Western blotting of decreasing amounts (50 ng – 17 pg) of a bacterial extract including a 40 kDa protein. Probed by Anti-His Serum (1:1.000) and Roth Anti Rabbit-HRP. His-Protein marker. Detection via chemoluminescence.

V. Recommended dilution:

1:1.000 (Western and ELISA)

Note: For every experimental setting the optimal dilution of the antibody has to be determined individually.

VI. Storage and Stability:

Store in aliquots at ≤ -20 °C.

Stock solution should be frozen and thawed only once. When stored undiluted at 4 °C, stable at least for 4 weeks.

Best before 2 years since production date when stored properly.

Not tested or intended for use in clinical tests (IVD-Guideline). Not tested or certified for human use (AMG, MPG).

VII. Transport temperature:

Cooled (ice packs).

VIII. Additional chemicals:

Albumin (BSA), Fr. V (Art. No. 8076)
Powdered Milk (fat-free) (Art. No. T145)
Anti Rabbit-HRP (Art. No. 4750.1)
Anti Rabbit-AP (Art. No. 4751.1)
Anti Rabbit-FITC (Art. No. 4752.1)
Roti[®]-Block (Art. No. A151)
Roti[®]-Stock 10x PBS (Art. No. 1058)
Roti[®]-Stock 10x PBST (Art. No. 1059)
Roti[®]-Stock 10x TBS (Art. No. 1060)
Roti[®]-Stock 10x TBST (Art. No. 1061)
Roti[®]-Free Stripping Buffer (Art. No. 0083)
MultiTag Protein (Control) (Art. No. 3999)

For Roth substrates for Western blot and ELISA please see www.carlroth.com / Life Science / Biochemistry / Substrates

IX. Trouble shooting:

In case no signal or only weak signal appears:

Epitope binding of Anti-His-tag antibodies is conformation sensitive. Some His-tags may be poorly detected by this antibody.

- 1.) Make sure to thoroughly denature proteins prior to PAGE.
- 2.) Use the buffer given in IV. Application.
- 3.) Use PVDF membranes.
- 4.) For establishment of the process use the MultiTag Protein (Control) (Art. No. 3999) or contact us under ++49-721-5606-0

Anti-His Serum 100 µl 3735.1