



# Instructions for use

## Mounting Media for Fluorescence Microscopy

ROTI®Mount FluorCare is an aqueous mountant, developed for fluorescence microscopical use. Due to special antifading substances the medium reduces photo bleaching drastically over many weeks.

In contrast to other media ROTI®Mount FluorCare does not exhibit auto fluorescence – neither at any common wave length (450-650 nm) nor in the UV range.

ROTI®Mount FluorCare is available as pure mountant and as special formulation with additional nuclear stain (DAPI or propidium iodide) allowing mounting and counterstaining at the same time.

DAPI has an excitation maximum at 359 nm and an emission at 461 nm.

Propidium iodide (PI) has an excitation maximum at 535 nm and an emission at 617 nm.

### Formulation

ROTI®Mount FluorCare contains glycerol, chemical polymers, antifading substances in PBS-buffer solution pH 7.2 and as preserving agent sodium azide (< 0.1 %).

### Storing

The solution should be stored at +4 °C in the dark, shelf life minimum 1 year.

For use the solution should have room temperature to ensure an ideal consistence.

### Application

ROTI®Mount FluorCare is convenient for cellular material and tissue sections. After staining the specimens are washed with aqua dest. or buffer, excessive liquid should be removed. For mounting one drop of medium is sufficient. After a cover slip is applied the medium disperses evenly over the specimen. Immediately afterwards the slides may be examined under fluorescent microscope.

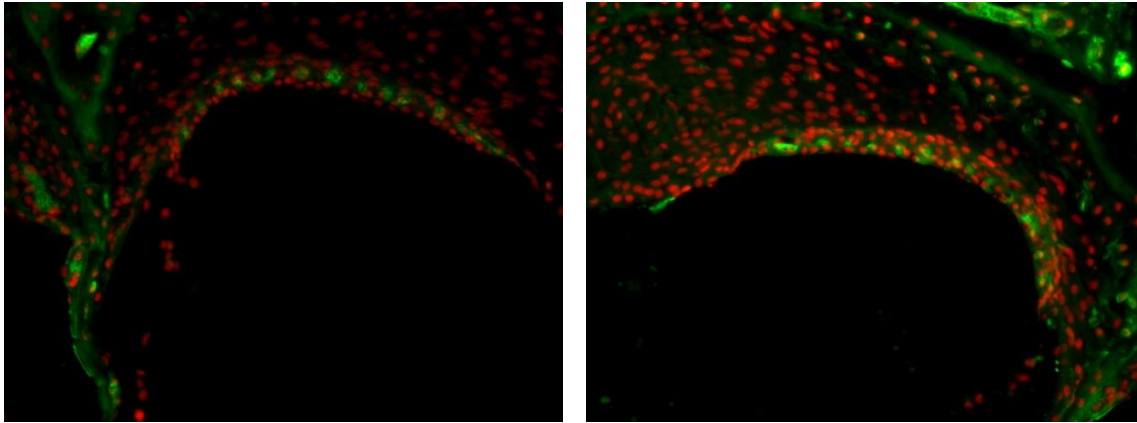
The process of solidifying should take place at a temperature of +4 °C in the dark. It will last for about a week, in the meantime the medium remains a viscous liquid. High temperatures would accelerate this process, but also force oxidation processes and, thereby, cause an accelerated decrease of antifading effect.

We commend to seal the cover slip edges with ROTI®Seal (Art. No. 6473) to avoid the building of bubble-like spaces in the medium caused by evaporated water.

### Storing of slides

The slides should be stored at +4 °C in the dark. This way the fluorescence is preserved over many weeks.

## Example of Use



a)

b)

### Figure:

Immunostaining of DNA adducts (red) and CNPase (green) in cryosections of the inner ear (stria vascularis) from mice

a) mounted in glycerol

b) mounted in ROTI®Mount FluorCare

With kind assistance of laboratory Dr. J. Thomale, DNA-Repair Group, Institute of Cell Biology, West German Cancer Centre Essen

<b>ROTI®Mount FluorCare</b>	<b>15 ml</b>	<b>HP19.1</b>
<b>ROTI®Mount FluorCare DAPI</b>	<b>15 ml</b>	<b>HP20.1</b>
<b>ROTI®Mount FluorCare PI</b>	<b>15 ml</b>	<b>HP21.1</b>

### Carl Roth GmbH + Co. KG

Schoemperlenstraße 3-5 • 76185 Karlsruhe

P.O. Box 100121 • 76231 Karlsruhe

Phone: +49 (0) 721/ 5606-0

Fax: +49 (0) 721/ 5606-149

info@carlroth.com • www.carlroth.com

sse 06/2021

The company is a limited partnership with headquarters in Karlsruhe, reg. court Mannheim HRA 100055. Roth Chemie GmbH, with headquarters in Karlsruhe, reg. court Mannheim HRB 100428, is the personally liable partner. Managing Director: André Houdelet. Sales tax identification number: DE 143621073.