

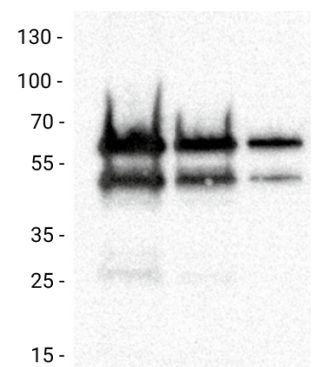
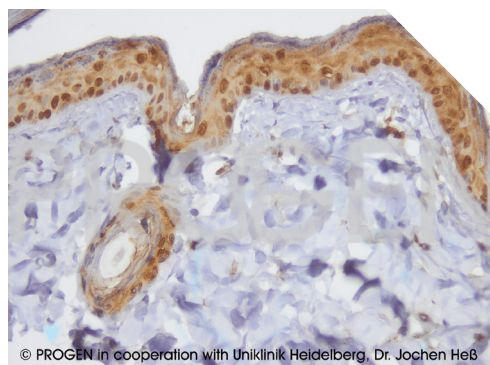
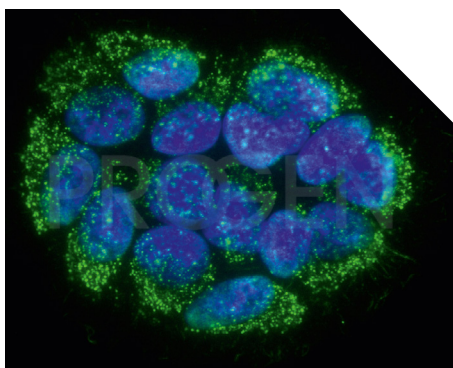
### Primary Antibodies

Due to our cooperation with PROGEN, our product assortment now includes a wide range of high-quality primary antibodies. The company PROGEN was founded in Heidelberg in 1983 and has been DIN EN ISO 13485 certified since 2010. High quality is guaranteed by the collaboration with leading research groups in the production of the antibodies.



The monoclonal antibodies have a high epitope affinity and are therefore ideally suited for various protein biochemical analyses or cell and tissue biology studies. The antibodies can be used e.g. in the following applications:

- Dot blots
- Enzyme-linked Immunosorbent Assays (**ELISA**)
- Immunohistochemistry (**IHC**)
- Immunoprecipitation (**IP**)
- Immunocytochemistry/immunofluorescence (**ICC/IF**)
- Western blots (**WB**)



# ANTIBODIES

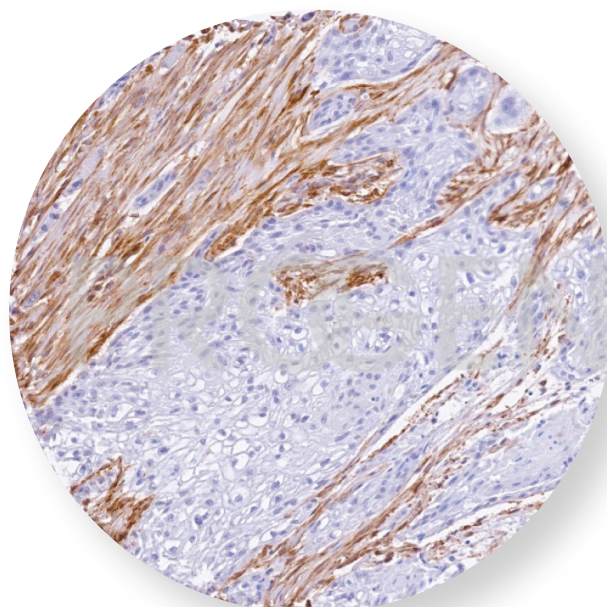
## Antibody, primary

50 µg/ml, monoclonal, affinity purified

This antibody portfolio includes a wide range of tissue- & tumor-specific primary antibodies for basic research, product development and analysis of a variety of biological questions.

The monoclonal antibodies are perfectly applicable for all cell or tissue biology studies and for the analysis of predictive markers in research.

- High epitope affinity
- Highly specific detection of the target protein
- Unconjugated
- Suitable for e.g. western blot, immunoprecipitation, ELISA & immunofluorescence



Product name	Purity	General application	Concentration	Art. No.	Pack Qty.
anti-Alkaline Phosphatase (intestinal) mouse monoclonal, V17.1	100 µg/ml, monoclonal, affinity purified	Cell membrane marker	100 µg/ml	1NLX.1	1 ml
anti-alpha-Smooth Muscle Actin mouse monoclonal, 1A4/ASM-1	100 µg/ml, monoclonal, affinity purified	Cytoskeleton marker	100 µg/ml	1NN1.1 1NN1.2	0.2 ml 1 ml
anti-beta-actin, clone AC-15, mouse monoclonal	100 µg/ml, monoclonal, affinity purified	Cytoskeleton and cytoplasmic marker	100 µg/ml	1NP6.1 1NP6.2	0.2 ml 1 ml
anti-Cardiac Actin mouse monoclonal, AC1-20.4.2	50 µg/ml, monoclonal, affinity purified	Cytoskeleton marker	50 µg/ml	1NLN.1 1NLN.2	0.2 ml 1 ml
anti-Cyclin D1 mouse monoclonal, DCS-6	100 µg/ml, monoclonal, affinity purified	Cell cycle marker	100 µg/ml	1NNX.1 1NNX.2	0.2 ml 1 ml
anti-Cyclin-Dependent Kinase 4 mouse monoclonal, DCS-156	50 µg/ml, monoclonal, affinity purified	Cell cycle marker	50 µg/ml	1NNE.1 1NNE.2	0.2 ml 1 ml
anti-Desmocollin 1 mouse monoclonal, Dsc1-U100	50 µg/ml, monoclonal, affinity purified	Cell to cell contact marker	50 µg/ml	1NN6.1 1NN6.2	0.2 ml 1 ml
anti-Desmocollin 3 mouse monoclonal, Dsc3-U114	50 µg/ml, monoclonal, affinity purified	Cell to cell contact marker	50 µg/ml	1NNL.1 1NNL.2	0.2 ml 1 ml
anti-Desmoglein 1/2 mouse monoclonal, DG 3.10	50 µg/ml, monoclonal, affinity purified	Cell to cell contact marker	50 µg/ml	1NP0.1 1NP0.2	0.2 ml 1 ml
anti-Desmoglein 2 mouse monoclonal, 10G11	500 µg/ml, monoclonal, affinity purified	Cell to cell contact marker	500 µg/ml	1NLT.1 1NLT.2	0.2 ml 1 ml
anti-Desmoplakin 1/2 mouse monoclonal, DP 1 + 2-2.15	50 µg/ml, monoclonal, affinity purified	Epithelium marker	50 µg/ml	1NP7.1 1NP7.2	0.2 ml 1 ml
anti-DNA mouse monoclonal, AC-30-10	100 µg/ml, monoclonal, chromatographically purified	Cell core marker (nucleus)	100 µg/ml	1NN5.1 1NN5.2	0.2 ml 1 ml
anti-EP-CAM mouse monoclonal, HEA125	50 µg/ml, monoclonal, affinity purified	Epithelium marker	50 µg/ml	1NP1.1 1NP1.2	0.2 ml 1 ml
anti-GAPDH mouse monoclonal, clone 6C5	100 µg/ml, monoclonal, affinity purified	GAPDH labelling (Western blot)	100 µg/ml	1NLP.1 1NLP.2	0.2 ml 1 ml
anti-Glial Fibrillary Acidic Protein mouse monoclonal, GF 12.24	50 µg/ml, monoclonal, affinity purified	Glial cell marker	50 µg/ml	1NP8.1 1NP8.2	0.2 ml 1 ml
anti-Keratin K5/K8 (Pan Epithelial) mouse monoclonal, C22	50 µg/ml, monoclonal, affinity purified	Epithelium marker	50 µg/ml	1NNO.1 1NNO.2	0.2 ml 1 ml
anti-Keratin K6 mouse monoclonal, KA12	50 µg/ml, monoclonal, affinity purified	Epithelium marker	50 µg/ml	1NN4.1 1NN4.2	0.2 ml 1 ml
anti-Keratin K7 mouse monoclonal, Ks7.18	50 µg/ml, monoclonal, affinity purified	Epithelium marker	50 µg/ml	1NNN.1 1NNN.2	0.2 ml 1 ml
anti-Keratin K17 mouse monoclonal, Ks17.E3	50 µg/ml, monoclonal, affinity purified	Epithelium marker	50 µg/ml	1NN2.1 1NN2.2	0.2 ml 1 ml
anti-Keratin K18 mouse monoclonal, Ks18.04	50 µg/ml, monoclonal, affinity purified	Epithelium marker	50 µg/ml	1NLY.1 1NLY.2	0.2 ml 1 ml
anti-Keratin K19 mouse monoclonal, Ks19.2 (Z105.6)	50 µg/ml, monoclonal, affinity purified	Epithelium marker	50 µg/ml	1NNK.1 1NNK.2	0.2 ml 1 ml
anti-Keratin K20 mouse monoclonal, IT-Ks20.8	50 µg/ml, monoclonal, affinity purified	Epithelial marker	50 µg/ml	1NNP.1 1NNP.2	0.2 ml 1 ml
anti-Keratin Type II mouse monoclonal, Ks pan1-8	50 µg/ml, monoclonal, affinity purified	Epithelium marker	50 µg/ml	1NNH.1 1NNH.2	0.2 ml 1 ml
anti-p16 Protein mouse monoclonal, DCS-50	100 µg/ml, monoclonal, affinity purified	Cell cycle marker	100 µg/ml	1NN9.1 1NN9.2	0.2 ml 1 ml
anti-p53 Protein mouse monoclonal, Bp53.11	50 µg/ml, monoclonal, affinity purified	Cell cycle marker	50 µg/ml	1NNY.1 1NNY.2	0.2 ml 1 ml
anti-Perilipin 1 (N-terminus) mouse monoclonal, PERI 112.17	100 µg/ml, monoclonal, affinity purified	Lipid marker	100 µg/ml	1NLH.1 1NLH.2	0.2 ml 1 ml
anti-Perilipin 2 (N-terminus) mouse monoclonal, AP125	50 µg/ml, monoclonal, affinity purified	Lipid marker	50 µg/ml	1NP4.1 1NP4.2	0.2 ml 1 ml
anti-Plakoglobin mouse monoclonal, PG 5.1	50 µg/ml, monoclonal, affinity purified	Cell to cell contact marker	50 µg/ml	1NNC.1 1NNC.2	0.2 ml 1 ml
anti-Synaptophysin mouse monoclonal, SY38	50 µg/ml, monoclonal, affinity purified	Tumour marker neuronal/adrenal	50 µg/ml	1NN3.1 1NN3.2	0.2 ml 1 ml
anti-Synaptopodin/SYNPO mouse monoclonal, G1D4	50 µg/ml, monoclonal, affinity purified	Cytoplasm marker podocytes/cerebrum	50 µg/ml	1NP2.1 1NP2.2	0.2 ml 1 ml
anti-Uroplakin III mouse monoclonal, AU1	100 µg/ml, monoclonal, affinity purified	Epithelium-/cell membrane marker	100 µg/ml	1NLK.1 1NLK.2	0.2 ml 1 ml
anti-Vimentin mouse monoclonal, VIM 3B4	50 µg/ml, monoclonal, affinity purified	Cytoskeleton marker	50 µg/ml	1NP3.1 1NP3.2	0.2 ml 1 ml

For safety information and additional data, see our current catalogue or at [www.carlroth.com](http://www.carlroth.com)

► No medical devices / No IVD products

Current prices at [www.carlroth.com](http://www.carlroth.com)

# ANTIBODIES

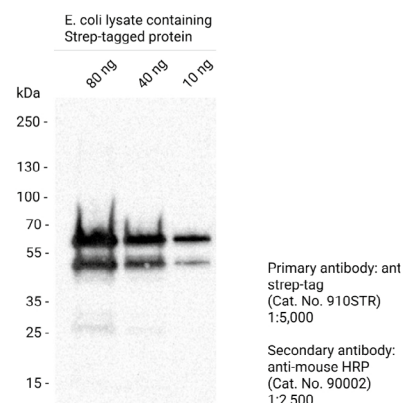
## Antibody, primary, anti-tag

lyophilized, monoclonal, affinity purified



Specific primary antibodies that recognise the most commonly used protein tags. The antibodies can be excellently used in cell or tissue biology studies, protein-protein interaction assays, post-translational modifications, expression dynamics or localisation studies, up to the production of analytical kits in laboratory or large scale.

- Available for most commonly used protein tags (His, DDDDK, GST, HA, myc, GFP & Strep)
- High affinity to the respective protein tag
- Robust & highly specific detection of the fusion protein
- Unconjugated
- Suitable for e.g. western blot, immunoprecipitation, ELISA & immunofluorescence



Product name	General application	Art. No.	Pack Qty.
anti-6-His-tag mouse monoclonal, 6His	Binding of His-tag proteins	1NNA.1	25 µg
		1NNA.2	100 µg
anti-c-myc-tag mouse monoclonal, 9E10	Binding of c-myc-tag proteins	1NNT.1	25 µg
		1NNT.2	100 µg
anti-DDDDK-tag mouse monoclonal, AP1501	Binding of DDDDK-tag proteins	1NLE.1	25 µg
		1NLE.2	100 µg
anti-GFP-tag mouse monoclonal, F56-6A1.2.3	Binding of GFP-tag proteins	1NPN.1	25 µg
		1NPN.2	100 µg
anti-GST-tag mouse monoclonal, F50-3D12.2	Binding of GST-tag proteins	1NN8.1	25 µg
		1NN8.2	100 µg
anti-HA-tag mouse monoclonal, 12CA5	Binding of HA-tag proteins	1NN7.1	25 µg
		1NN7.2	100 µg
anti-Strep-tag mouse monoclonal, C23.21	Binding of Strep-tag proteins	1NLL.1	25 µg
		1NLL.2	100 µg

For safety information and additional data, see our current catalogue or at [www.carlroth.com](http://www.carlroth.com)

► No medical devices / No IVD products

Current prices at [www.carlroth.com](http://www.carlroth.com)

### Contact international:

Phone +49 721/5606 510 · Fax +49 721/5606 111 · [info@carlroth.com](mailto:info@carlroth.com) · [www.carlroth.com](http://www.carlroth.com)

Carl Roth GmbH + Co. KG · Schoemperlenstr. 3-5 · D-76185 Karlsruhe

Export prices might be higher.

All supplies and deliveries are subject to the terms and conditions of sale and delivery of Carl Roth GmbH + Co. KG, Karlsruhe