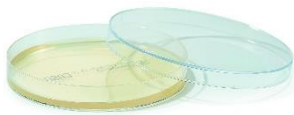


Technical Info



Ready-Made Media

Summary acc. to application

Art. No.	Medium	Media Specialised for...													
		Ph. Eur.	ISO/DIN	Water	Milk	Drinks	Foods	Feeds	Cosmetics	Clin.	Veterinary	Mycology	Environme	Special	Mol Biol
4827	CompactDry™ CF														
4826	CompactDry™ EC														
4828	CompactDry™ ETB														
4817	CompactDry™ SL														
4816	CompactDry™ TC														
1070	CompactDry™ X-BC														
1087	CompactDry™ X-SA														
4818	CompactDry™ YM														
9646	ROTI@Aquatest Plate Cetr														
9640	ROTI@Aquatest Plate PCA														
9644	ROTI@Aquatest Plate R2A														
9643	ROTI@Aquatest Plate Sab4														
9650	ROTI@Aquatest Plate Staph														
9642	ROTI@Aquatest Plate YE														
2313	ROTI@ContiPlate MacCon														
9630	ROTI@ContiPlate PCA														
9632	ROTI@ContiPlate RBC														
9633	ROTI@ContiPlate Sab4plus														
2312	ROTI@ContiPlate TSA														
9634	ROTI@ContiPlate TSA-Letheen														
2314	ROTI@ContiPlate VRB														
9631	ROTI@ContiPlate VRBD														
3934	ROTI@DipSlide CASO-TTC/RBCenr														
2957	ROTI@DipSlide CLED/MacCon														
8023	ROTI@DipSlide D/Eneutral														
8045	ROTI@DipSlide MacCon/Cetr														
2837	ROTI@DipSlide Nutrient-TTC														
2927	ROTI@DipSlide PCA														
2493	ROTI@DipSlide PCA/Legionella														
2926	ROTI@DipSlide PCA/RBCplus														
8715	ROTI@DipSlide PCA/TSA-Letheen														
2925	ROTI@DipSlide PCA/VRB														
2924	ROTI@DipSlide PCA/VRBD														
2956	ROTI@DipSlide Sab4plus														
2954	ROTI@DipSlide VRBD														
1ATX	ROTI@Plate90 CASO														
1AX1	ROTI@Plate90 PCA														
1AX0	ROTI@Plate90 Sab4Cla														



Art. No.	Medium	Media Specialised for...													
		Ph. Eur.	ISO/DIN	Water	Milk	Drinks	Foods	Feeds	Cosmetic	Clin.	Veterinary	Mycology	Environm	Special	Mol Biol
1ATT	ROTI@Plate90 TSA														
1AX2	ROTI@Plate90 VRBD														
1ATY	ROTI@Plate90 YGC														

Legend:

Ph. Eur.	Media acc. to European Pharmacopeia
ISO/DIN	Media acc. to ISO, DIN or other norms (exc. Ph. Eur.)
Water	Media for analysis of water and wastewater
Milk	Media for analysis of dairy products
Drinks	Media for analysis of alcoholic and soft drinks (beer, wine, juice etc.)
Foods	Media for analysis of foods in general
Feeds	Media for analysis of feeds
Cosmetics	Media for analysis of cosmetics
Clin. microb.	Media for clinical microbiology
Veterinary	Media for veterinary analyses
Mycology	Media for analysis of yeasts and moulds
Environment	Media for analysis of environmental microorganisms
Special	Media for special applications
Mol Biol	Media for applications in molecular biology

j.h. 10/2020